

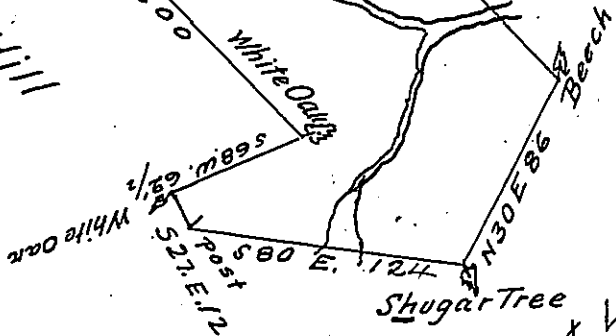
Pg. 203

Pg. 184

John George
White Oak

White Oak
Begin. O.

High Hill



Vacant Land

The Draught of a Tract of land called Sugar Tree Bottom
 Situate on the Heads of Middle Creek in the County of Cumber-
 land containing One hundred Eighty five acres and an half
 acres with the usual allowance of six acres p Cent for roads
 Survey'd the 17th day of October Anno Domi 1766 in pursuance of
 an Order of Survey N^o 342 to John Glenn bearing date at
 Philad^a the first day of August A.D. 1766

P. W. Maclay D.S.

To John Lukens Esq J.G.
of Pennsylvania

IN TESTIMONY that the above is a copy of the original remaining on file in
 the Department of Internal Affairs of Pennsylvania, made
 conformably to an Act of Assembly approved the 16th day of
 February, 1833, I have hereunto set my Hand and caused
 the Seal of said Department to be affixed at Harrisburg,
 this twenty-third day of November 1905

Loac P. Brown
 Secretary of Internal Affairs.